



# GMS KUDETA

**Self-Propelled Self-Elevating  
Jackup Barge**

**ABS A1, + PAS**

Owner & Operator: Gulf Marine Services | Year of Build: 2007

Maintenance & Commissioning

Well Intervention

Heavy Lift & Decommissioning

Wind Turbine Installation & Maintenance

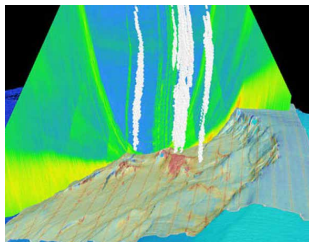


Chartering  
[chartering@gmsplc.com](mailto:chartering@gmsplc.com)

## STANDARD SPECIFICATIONS



## BESPOKE OPTIONAL CAPABILITIES



**GEOTECHNICAL  
& GEOPHYSICAL  
SUPPORT**



**SPLASH ZONE /  
SUBSEA  
OPERATIONS**



**DECK EXTENSION**



**ADDITIONAL  
PERMANENT LIVING  
QUARTERS**

## GMS KUDETA SPECIFICATIONS

Main Particulars		Leg Design		Tank Capacities		Fire & Gas Detection System	
LOA / Length BP	43.20 m	Leg Design	4 x Watertight Tubular Legs	Fresh Water	216.12 m <sup>3</sup>	Fire Detection System	Consilium / Salwico CS400
Beam	34.80 m	Leg Length	67.9 m	Fuel Oil	68.72 m <sup>3</sup>	Gas Detection System	MX 52 Oldham
Sailing Draft inc. Spudcans	4.45 m	Max Water Depth	45 m	Ballast Water	580.95 m <sup>3</sup>		
GRT	2910 t	Spudcan Area	27.3 m <sup>2</sup> each	Lube Oil	7.70 m <sup>3</sup>		
Deck Area	650 m <sup>2</sup>			Dirty Oil	9.63 m <sup>3</sup>		
Deck Loading	5 t / m <sup>2</sup>			Sewage	15.40 m <sup>3</sup>		

Deck Equipment		Propulsion & Generators		Accommodation	
Anchor	1 x 6.5 t Storm Anchor	Generator Sets	Caterpillar, 3 x 800 kw	Single Cabins	6
Winches	4 x 80 KN	Emergency Generators	1 x 99 kw	2 Berth Cabins	34
Wire Capacity	32 mm, 4 x 400 m	Azimuth Thrusters	Aquamaster, 2 x 725 kw	4 Berth Cabins	19
Cranes	Liebherr 45 t @ 26 m, 5 t @ 30 m Hydralift 9.5 t @ 18 m	Tunnel Thrusters	Kamewa, 2 x 260 kw	Total POB	150*
		Speed	4 Knots	Hospital	1
		F.O. Pump	Desmi, 2 x 30 m <sup>3</sup> / hr	Office Conference Areas	180 m <sup>2</sup>
		Air Compressor	Sperre, 2 x 17 m <sup>3</sup> / hr		
		Water Maker	Water Maker 2 x 27 t / day		

*\*POB may be expanded using temporary accommodation units on deck and/or room configuration can be tailored to suit client requirements*

Jacking System		Safety Equipment		Helideck	
Jacking Units	4 (BLM Rack and Pinion)	Lifeboats	2 x 102 persons	Aircraft	AW 139 Bell 212 Bell 412 CAP 437
Jacking Speed	0.70 m / min	Liferafts	12 x 25 persons	Fire Fighting System	AFFF
Air Gap (Max)	25 m	Rescue Boat	6 persons	Diameter	17 m
Max Bearing Pressure	42.46 t / m <sup>2</sup>	CO <sub>2</sub> System	Engine & Galley & Emergency Gen. Room		
Leg Length	67.9 m	Fire detection system	CS 4000 Fire Alarm		
		Gas detection system	MX 52 Oldham		

## KEY SPECIFICATIONS OF ENTIRE GMS FLEET

Name of Vessel	Propulsion	Standard POB	Leg Length	Variable Load (VDL) Elevated/Jacking	Deck Area	Main Crane Capacity
Kamikaze	Self Propelled	150	67.9m	750t / 450t	650 m <sup>2</sup>	36t
Kawawa	Self Propelled	150	67.9m	750t / 450t	650 m <sup>2</sup>	45t
Kikuyu	Self Propelled	150	67.9m	750t / 450t	650 m <sup>2</sup>	45t
Kudeta	Self Propelled	150	67.9m	750t / 450t	650 m <sup>2</sup>	45t
Keloa	Self Propelled	150	67.9m	750t / 450t	650 m <sup>2</sup>	45t
Pepper	Self Propelled	150	76.9m	800t / 900t	800 m <sup>2</sup>	75t
Shamal	DP2 Self Propelled	150	75m	1,550t / 900t	800 m <sup>2</sup>	150t
Scirocco	DP2 Self Propelled	150	75m	1,550t / 900t	800 m <sup>2</sup>	150t
Sharqi	DP2 Self Propelled	150	75m	1,550t / 900t	800 m <sup>2</sup>	150t
Endurance	DP2 Self Propelled	210	104m	1,855t / 1,855t	1035 m <sup>2</sup>	300t
Endeavour	DP2 Self Propelled	246	94.2m	1,650t / 1,650t	1035 m <sup>2</sup>	230t
Enterprise	DP2 Self Propelled	194	104m	1,750t / 1,750t	1035 m <sup>2</sup>	400t
Evolution	DP2 Self Propelled	150	94.2m	1,700t / 1,700t	667 m <sup>2</sup>	200t

## COMPARATIVE VESSEL CAPABILITIES

Description of capabilities	GMS Fleet	Jackup Drilling Rigs	Semi-sub/ Construction Vessels	Accommodation Rigs
<b>Construction &amp; Maintenance</b>				
Construction & installation support	✓	×	✓	×
Maintenance support	✓	×	✓	×
Diving support	✓	✓	×	×
Accommodation	✓	×	✓	✓
Remove/decommission topside modules	✓	×	✓	×
<b>Well Servicing &amp; EOR</b>				
Coiled tubing	✓	✓	×	×
Wireline	✓	✓	×	×
Well workover	✓	✓	×	×
Well testing/ early production	✓	✓	×	×
<b>Wind</b>				
Installation	✓	×	✓	×
Maintenance & repair	✓	×	✓	×

## GULF MARINE SERVICES PLC



### Rest of the World

Office 403, International Tower  
24<sup>th</sup> (Karama) Street  
PO Box 46046  
Abu Dhabi, UAE  
T +971 2 502 8888  
F +971 2 555 3421

### Saudi Arabia

2<sup>nd</sup> Floor, Abdullah Fouad Tower  
King Fahd Road, Al Khobar  
Eastern Province  
PO Box 31411, KSA  
T +966 13 8064070  
F +966 13 8102100

### Qatar

11th Floor, Marina Twin  
Towers Street 305, Lusail  
P.O. Box 301477  
Doha, Qatar  
T +971 2 502 8801  
F +971 2 555 3421